



# ProWaterParts

Quality Components at  
Competitive Prices

# 2012

## Pentek Filtration Products



Pentek Authorized Dealer

ProWaterParts  
1359 Gresham Road  
Marietta, Georgia 30062  
Tel: 770.420.6447  
Fax: 1.866.977.6339  
Email: [sales@prowaterparts.com](mailto:sales@prowaterparts.com)  
Web: [www.prowaterparts.com](http://www.prowaterparts.com)



## Table of Contents

<b>Item and Description</b>	<b>Page Number</b>
Standard Carbon Block Cartridges	4
Big Blue Carbon Block Cartridges	5
Standard Taste & Odor Removal Cartridges	6
Big Blue Taste & Odor Removal Cartridges	7
Chloramine Reduction Cartridges	8
Coconut Shell Granular Activated Carbon Inline Cartridges	9
Bacteriostatic Inline Cartridges	10
Sediment & Rust Particulate Inline Cartridges	10
pH Stabilizer Inline Cartridges (Calcite & Coconut Shell Carbon)	10
Lime, Scale, and Chlorine Taste & Odor Inline Cartridges	11
Lime & Scale Inline Cartridges	11
TDS Reduction Inline Cartridges: High Capacity DI Resin Filters	11
Inline Carbon Block Cartridges	12
Inline Lead, Cysts, Particulate, and Chlorine Taste & Odor	12
Standard Melt Blown Sediment Cartridges	13
Big Blue Melt Blown Sediment Cartridges	14
Big Blue Gradient Density Melt Blown Sediment Cartridges	15
3G Slim Line Housings with Mounting Boss	16
3G Slim Line Housings with Integrated Bracket	17
3G Standard Housings	18
3G Standard Housings & Valve-in-Head Housings	19
3G Standard Housings with Integrated Bracket	19
Big Blue & Big Clear Housings	20
Filter Housing Mounting Brackets	21
Filter Housing Wrenches	22
Filter Housing O-Rings	22
Pentek Quick-Change Filter Systems	23
Notes	24
Order Form	25



Carbon cartridges utilize activated carbon and other activated materials to remove contaminants from water. Most carbon filters also use mechanical filtration as well so both sediment and chemicals are reduced.

### Standard Carbon Block Cartridges

Part No.	Model Name & Description	Micron Rating	Volume (cu ft)	Weight (lbs)	Case Quantity	Price
455903-43	FloPlus 10	0.5	0.66	7	12	\$20.80
155162-43	CBC-10 Carbon Block	0.5	0.74	14	12	\$16.75
155713-43	CCBC-10 Coconut Carbon Block	1	0.74	12.8	12	\$19.30
155268-43	CBR2-10 Carbon Block w/Lead Reduction	0.5	0.74	19.4	12	\$20.97
155403-43	CBR2-10R Carbon Block w/Lead Reduction and Flow	0.5	0.74	19.4	12	\$21.31
155714-43	CEP-10E Thin Wall Coconut Carbon Block	5	0.74	9.6	12	\$14.56
155531-43	EP-10 Carbon Block	5	0.74	14	12	\$8.99
155634-43	EPM-10 Carbon Block	10	0.74	14	12	\$6.50
255382-43	CB1-10 Carbon Block	1	0.75	14	12	\$10.92
455904-43	FloPlus 20	0.5	1.31	14.5	12	\$40.47
155309-43	CBC-20 Carbon Block	0.5	1.17	15	6	\$31.81
155529-43	EP-20 Carbon Block	5	1.17	17	6	\$18.04
155635-43	EPM-20 Carbon Block	10	1.17	17	6	\$15.23

### Big Blue Carbon Block Cartridges

Part No.	Model Name & Description	Micron Rating	Volume (cu ft)	Weight (lbs)	Case Quantity	Price
455905-43	FloPlus 10BB	0.5	0.88	9	12	\$61.83
155170-43	CBC-BB Carbon Briquette	0.5	0.62	12.5	4	\$51.15
155548-43	EP-BB Carbon Briquette	5	0.62	12.5	4	\$32.38
155782-43	EPM-BB Carbon Block	10	0.62	12.5	4	\$31.59
455906-43	FloPlus 20BB	0.5	1.76	18	6	\$103.42
155312-43	CBC20-BB Carbon Block	0.5	1.36	28	4	\$110.45
155583-43	EP-20BB Carbon Block	5	1.36	28	4	\$62.95
155783-43	EPM-20BB Carbon Block	10	1.36	28	4	\$57.43

Pentek Cartridges

With a focus on residential and commercial water treatment markets, Pentek brand filter products remove contaminants and suspended solids from the water, providing clean, safe drinking water and protecting and extending the life of household appliances and critical equipment. Pentek's specialized filtration products and process technologies include filter housings, sediment and carbon filter cartridges, ultraviolet, reverse osmosis, and bacterial and virus reduction systems.

From small or simple...to large, heavy duty or complex, Pentek filtration products come in a wide range of styles, sizes and capabilities. All have been designed for easy installation and maintenance, and are backed by a certified and dedicated technical support team to help with any application questions or issues that may arise.

**Can't find what you're looking for?  
Let us know....we're here to help.**

**An order form is conveniently located  
at the end of this catalog.**

C Series cartridges offer an economical solution for all your general purpose water filtration needs. Constructed of a carbon-impregnated cellulose media, these dual-purpose cartridges filter out fine sediment particles and reduce unwanted taste, odor, and chlorine taste & odor from your tap water. A polyester reinforcement backing and external netting provide additional strength and dirt-loading capacity.

#### Features, Options, and Benefits:

- Available in two different micron sizes
- Five products with a choice of three lengths and three diameters
- Economic solution for basic chlorine reduction
- Both chlorine and sediment reduction
- High flow rates possible due to low initial pressure drop
- Good dirt-holding capacity
- General purpose taste & odor reduction for residential chlorinated water supplies
- Polishing filter for process or closed-loop streams



The C1 is Tested and Certified by NSF International to NSF/ANSI Standard 42 for material requirements only.

### Standard Taste & Order Removal Cartridges

Part No.	Model Name & Description	Micron Rating	Volume (cu ft)	Weight (lbs)	Case Quantity	Price
155022-43	C2 Activated Carbon-Impregnated Cellulose	5	0.56	6.5	24	\$7.02
155109-43	GAC-10 Granular Activated Carbon	N/A	0.74	12.1	12	\$11.75
155155-43	CC-10 Coconut Granular Activated Carbon	N/A	0.74	12.1	12	\$12.39
155597-43	C1-20 Activated Carbon-Impregnated Cellulose	5	1.52	12	14	\$16.19
155111-43	GAC-20 Granular Activated Carbon	N/A	1.18	16.6	6	\$23.94
155065-43	RFC-20 Radial-Flow Granular Activated Carbon	7	1.18	11.4	6	\$39.18

GAC Series cartridges effectively reduce unwanted tastes and odors, including chlorine taste & odor, from your drinking water. They are designed to allow maximum contact between the water and carbon, ensuring optimal adsorption.

### Features, Options, and Benefits:

- Effective bad taste & odor and chlorine & odor reduction
- Designed for optimal adsorption
- 20-micron post-filter reduces carbon fines
- Available in a variety of sizes and flow rates

The GAC-10 and GAC-20BB are Tested and Certified by NSF International to NSF/ANSI Standard 42 for material requirements only.



Pentek Cartridges

## Big Blue Taste & Odor Removal Cartridges

Part No.	Model Name & Description	Micron Rating	Volume (cu ft)	Weight (lbs)	Case Quantity	Price
155398-43	NCP-BB Pleated Carbon-Impregnated Polyester	10	1.23	12.9	8	\$25.07
155141-43	RFC-BB Radial-Flow Carbon	25	1.23	19.3	8	\$42.21
155249-43	GAC20-BB Granular Activated Carbon	N/A	1.36	19	4	\$66.44
155382-43	NCP-20BB Pleated Carbon-Impregnated Polyester	10	2.13	21.6	6	\$48.91
155247-43	RFC20-BB Radial-Flow Granular Activated Carbon	25	2.13	27.1	6	\$83.07

NCP Series cartridges are constructed from a carbon-impregnated non-cellulose media. They offer sediment filtration, as well as taste, odor, and chlorine taste & odor reduction in one cartridge. Unlike cellulose cartridges, NCP Series cartridges are resistant to bacterial attack allowing them to be used for municipal and non-chlorinated water applications. NCP Series cartridges are excellent polishing filters for closed loop streams and are ideal for post reverse osmosis and well water applications.



### Features, Options, and Benefits:

- Non-cellulose media resists bacterial attack
- Provides sediment filtration and chlorine taste & odor reduction
- Pleated for maximum dirt-loading capacity
- Nominal 10-micron rating

### Chloramine Reduction Cartridges

Part No.	Model Name & Description	Micron Rating	Volume (cu ft)	Weight (lbs)	Case Quantity	Price
255416-43	ChlorPlus 10 Carbon Block	1	0.75	11.6	12	\$22.65
255417-43	ChlorPlus 20 Carbon Block	1	0.85	13.7	6	\$44.63
355752-43	ChlorPlus-BB Carbon Block	1	0.62	10	4	\$69.02
355753-43	ChlorPlus-20BB Carbon Block	1	1.36	20	4	\$149.12

Pentek offers multiple product solutions for chloramine reduction. Chloramine is increasingly becoming more common as an alternative to chlorine for water treatment.

The ChlorPlus® carbon block cartridges help reduce sediment while providing greater chloramine performance capacities than granular carbon. They also significantly reduce the carbon fines found in many granular canisters.

The CRFC20-BB heavy duty radial flow cartridge measures 4-1/2” in diameter and 20 inches long, which is ideal for higher flow rate and capacity applications. This cartridge incorporates a 70-micron porous polypropylene outer shell and a spun polypropylene-wrapped core. The bed of granular activated carbon (GAC) between the outer shell and core creates a unique radial flow design which effectively removes chloramine, has a low pressure drop, and helps to reduce fines commonly seen in GAC-style cartridges.

- Features, Options, and Benefits:**
- Superior chloramine and chlorine reduction
  - CRFC20-BB Radial Flow
  - ChlorPlus® Series Carbon Briquette







## Pentek GS Series

The Pentek GS Series Inline Filter Cartridge Replacements produce cleaner, better tasting water. They can be utilized in numerous applications such as reverse osmosis systems, food service, water coolers, refrigerators, ice makers, and more.

### Coconut Shell Granular Activated Carbon Inline Cartridges

Part No.	Model Name & Description	Micron Rating	Volume (cu ft)	Weight (lbs)	Case Quantity	Price
255515-43	GS-6RO-B-1/4" FPT 2" x 6"	5	0.24	6	12	\$9.11
255519-43	GS-6RO-G-1/4" John Guest 2" x 6"	5	0.24	6	12	\$12.15
255521-43	GS-10RO-B-1/4" FPT 2" x 10"	5	0.37	12	12	\$9.71
255522-43	GS-10RO-C-3/8" FPT 2" x 10"	5	0.37	12	12	\$9.71
255525-43	GS-10RO-G-1/4" John Guest 2" x 10"	5	0.37	12	12	\$12.76
255526-43	GS-10RO-H-3/8" John Guest 2" x 10"	5	0.37	12	12	\$12.76
255528-43	GS-210RO-C-3/8" FPT 2.5" x 11"	5	0.61	14	12	\$13.97
255531-43	GS-215RO-B-1/4" FPT 2.5" x 14"	5	0.61	18	12	\$14.43

### Bacteriostatic Inline Cartridges

Part No.	Model Name & Description	Micron Rating	Volume (cu ft)	Weight (lbs)	Case Quantity	Price
255547-43	GS-6EXTRA.25-B-1/4" FPT 2" x 6"	5	0.24	10	12	\$14.40
255551-43	GS-6EXTRA.25-G-1/4" John Guest¥ 2" x 6"	5	0.24	10	12	\$17.53
255553-43	GS-10EXTRA.5-B-1/4" FPT 2" x 6"	5	0.37	10	12	\$16.56
255554-43	GS-10EXTRA.5-C-3/8" FPT 2" x 10"	5	0.37	15	12	\$16.55
255559-43	GS-210EXTRA1-B-1/4" FPT 2.5" x 11"	5	0.61	24	12	\$28.15

### Sediment & Rust Particulate Inline Cartridges

Part No.	Model Name & Description	Micron Rating	Volume (cu ft)	Weight (lbs)	Case Quantity	Price
255569-43	GS-6SED/5-B-1/4" FPT 2" x 6"	5	0.24	5	12	\$10.03
255573-43	GS-6SED/5-G-1/4" John Guest¥ 2" x 6"	5	0.24	5	12	\$12.89
255576-43	GS-10SED/5-C-3/8" FPT 2" x 10"	5	0.37	7	12	\$10.31
255579-43	GS-10SED/5-G-1/4" John Guest¥ 2" x 10"	5	0.37	7	12	\$13.06
255582-43	GS-210SED/5-C-3/8" FPT 2.5" x 11"	5	0.61	14	12	\$16.61
255587-43	GS-215SED/5-G-1/4" John Guest¥ 2.5" x 14"	5	0.61	18	12	\$20.13

### pH Stabilizer Inline Cartridges (Calcite & Coconut Shell Carbon)

Part No.	Model Name & Description	Micron Rating	Volume (cu ft)	Weight (lbs)	Case Quantity	Price
255541-43	GS-10CAL/RO-B-1/4" FPT 2" x 10"	20	0.37	13	12	\$11.44
255546-43	GS-10CAL/RO-H-3/8" John Guest¥ 2" x 10"	20	0.37	13	12	\$14.85

### Lime, Scale, and Chlorine Taste & Odor Inline Cartridges

Part No.	Model Name & Description	Micron Rating	Volume (cu ft)	Weight (lbs)	Case Quantity	Price
255589-43	GS-6ALS-B-1/4" FPT 2" x 6"	20	0.24	6	12	\$12.32
255590-43	GS-6ALS-C-3/8" FPT 2" x 6"	20	0.24	6	12	\$12.32
255595-43	GS-10ALS-B-1/4" FPT 2" x 10"	20	0.37	10	12	\$14.52
255596-43	GS-10ALS-C-3/8" FPT 2" x 10"	20	0.37	10	12	\$14.52
255599-43	GS-10ALS-G-1/4" John Guest <sup>®</sup> 2" x 10"	20	0.37	10	12	\$17.66
255600-43	GS-10ALS-H-3/8" John Guest <sup>®</sup> 2" x 10"	20	0.37	10	12	\$18.28

### Lime & Scale Inline Cartridges

Part No.	Model Name & Description	Micron Rating	Volume (cu ft)	Weight (lbs)	Case Quantity	Price
255603-43	GS-10PH-B-1/4" FPT 2" x 10"	N/A	0.24	22	12	\$25.50
255604-43	GS-10PH-G-1/4" John Guest <sup>®</sup> 2" x 10"	N/A	0.24	22	12	\$28.37

### TDS Reduction Inline Cartridges: High Capacity DI Resin Filters

Part No.	Model Name & Description	Micron Rating	Volume (cu ft)	Weight (lbs)	Case Quantity	Price
255655-43	GS-210DI-B-1/4" FPT 2.5" x 11"	20	0.61	17	12	\$22.63
255659-43	GS-215DI-B-1/4" FPT 2.5" x 14"	20	0.61	24	12	\$27.78

### Inline Carbon Block Cartridges

Part No.	Model Name & Description	Micron Rating	Volume (cu ft)	Weight (lbs)	Case Quantity	Price
255615-43	GS-10CB-1-G-1/4" John Guest <sup>®</sup> 2" x 10"	1	0.37	9	12	\$23.75
255616-43	GS-10CB-1-H-3/8" John Guest <sup>®</sup> 2" x 10"	1	0.37	9	12	\$24.35
255625-43	GS-6CB-5-B-1/4" FPT 2" x 6"	5	0.24	5	12	\$17.62
255626-43	GS-6CB-5-C-3/8" FPT 2" x 6"	5	0.24	5	12	\$17.62
255629-43	GS-6CB-5-G-1/4" John Guest <sup>®</sup> 2" x 6"	5	0.24	5	12	\$20.64
255631-43	GS-10CB-5-B-1/4" FPT 2" x 10"	5	0.37	9	12	\$19.44
255632-43	GS-10CB-5-C-3/8" FPT 2" x 10"	5	0.37	9	12	\$19.44
255635-43	GS-10CB-5-G-1/4" John Guest <sup>®</sup> 2" x 10"	5	0.37	9	12	\$22.48
255636-43	GS-10CB-5-H-3/8" John Guest <sup>®</sup> 2" x 10"	5	0.37	9	12	\$23.08
255637-43	GS-210CB-5-B-1/4" FPT 2.5" x 11"	5	0.61	11	12	\$26.12
255641-43	GS-215CB5-1/4" FPT 2.5" x 14"	5	0.61	13	12	\$32.41
255642-43	GS-215CB-5-C-3/8" FPT 2.5" x 14"	5	0.61	13	12	\$33.10
255643-43	GS-215CB-5-G-1/4" John Guest <sup>®</sup> 2.5" x 14"	5	0.61	13	12	\$36.75

### Inline Lead, Cysts, Particulate, and Chlorine Taste & Odor

Part No.	Model Name & Description	Micron Rating	Volume (cu ft)	Weight (lbs)	Case Quantity	Price
255649-43	GS-10LS-G-1/4" John Guest <sup>®</sup> 2" x 10"	0.5	0.37	9	12	\$28.83
255651-43	GS-210LS-B-1/4" FPT 2.5" x 11"	1	0.61	15	12	\$32.50

P Series cartridges are manufactured from pure 100% polypropylene fibers. The fibers have been carefully spun together to form a true gradient density from out to inner surfaces.

P Series cartridges are designed for purity. They will not impart taste, odor or color to the liquid being filtered when used within the recommended temperature limit. Additionally, the polypropylene construction provides superior chemical resistance and is not prone to bacterial attack.

**Features, Options, and Benefits:**

Manufactured from pure 100% polypropylene

Designed for purity and chemical compatibility

Spun fibers form a true gradient density from outer to inner surfaces

The P1, P5, P1-20, and P5-20 is Tested and Certified by NSF International to NSF/ANSI Standard 42 for material requirements only.



Pentek Melt Blown Sediment Cartridges

## Standard Melt Blown Sediment Cartridges

Part No.	Model Name & Description	Micron Rating	Volume (cu ft)	Weight (lbs)	Case Quantity	Price
155225-43	P1 Spun Polypropylene	1	1.02	10.1	24	\$4.35
155014-43	P5 Spun Polypropylene	5	1.02	9.4	24	\$4.01
155015-43	P25 Spun Polypropylene	25	1.02	8.5	24	\$3.91
155304-43	P1-20 Spun Polypropylene	1	1.67	15.6	20	\$8.97
155016-43	P5-20 Spun Polypropylene	5	1.67	15.6	20	\$8.14
155226-43	P25-20 Spun Polypropylene	25	1.67	15.6	20	\$7.91



DGD Series cartridges are manufactured from 100% pure polypropylene and are sized for use in our Big Blue® Filter Housings.

DGD Series cartridges are designed for purity and will not impart taste, odor or color to the liquid being filtered. Additionally, the polypropylene construction provides superior chemical resistance and is not prone to bacterial attack.

**Features, Options, and Benefits:**

- Manufactured from pure 100% polypropylene
- Designed for purity and chemical compatibility
- Spun fibers form a gradient density from outer to inner surfaces

Tested and Certified by NSF International to NSF/ANSI Standard 42 for material requirements only.

### Big Blue Melt Blown Sediment Cartridges

Part No.	Model Name & Description	Micron Rating	Volume (cu ft)	Weight (lbs)	Case Quantity	Price
155359-43	DGD-2501 Dual-Gradient Polypropylene	1	1.42	10	8	\$14.55
155357-43	DGD-5005 Dual-Gradient Polypropylene	5	1.42	10	8	\$14.02
155355-43	DGD-7525 Dual-Gradient Polypropylene	25	1.42	10	8	\$13.91
155360-43	DGD-2501-20 Dual-Gradient Polypropylene	1	2.13	23	6	\$26.90
155358-43	DGD-5005-20 Dual-Gradient Polypropylene	5	2.13	23	6	\$25.81
155356-43	DGD-7525-20 Dual-Gradient Polypropylene	25	2.13	23	6	\$25.70

### Big Blue Gradient Density Melt Blown Sediment Cartridges

Part No.	Model Name & Description	Micron Rating	Volume (cu ft)	Weight (lbs)	Case Quantity	Price
555465-43	GD-2501-BB Gradient Polypropylene	1	1.42	10	8	\$16.91
555466-43	GD-5010-BB Gradient Polypropylene	10	1.42	10	8	\$16.91
555467-43	GD-7520-BB Gradient Polypropylene	20	1.42	10	8	\$16.91
555468-43	GD-2501-20BB Gradient Polypropylene	1	2.13	23	6	\$32.09
555469-43	GD-5010-20BB Gradient Polypropylene	10	2.13	23	6	\$32.09
555470-43	GD-7520-20BB Gradient Polypropylene	20	2.13	23	6	\$32.09
555471-43	GDA-250.5-BB Gradient Polypropylene - Absolute	0.5	1.42	10	8	\$25.54
555472-43	GDA-5001-BB Gradient Polypropylene - Absolute	1	1.42	10	8	\$25.54
555473-43	GDA-7505-BB Gradient Polypropylene - Absolute	5	1.42	10	8	\$25.54
555474-43	GDA-250.5-20BB Gradient Polypropylene - Absolute	0.5	2.13	23	6	\$49.32
555475-43	GDA-5001-20BB Gradient Polypropylene - Absolute	1	2.13	23	6	\$49.32
555476-43	GDA-7505-20BB Gradient Polypropylene - Absolute	5	2.13	23	6	\$49.32

Pentek Melt Blown Sediment Cartridges



Slim Line Housings are the perfect choice for low-flow filtration applications. Their slim design and high chemical compatibility make them ideal for those challenging applications.

Typical applications for the 3G Slim Line® Housings include, but are not limited to, undersink residential filtration, pre- and post reverse osmosis systems, recreational vehicle filtration, and food service.

### 3G Slim Line Housings with Mounting Boss

Part No.	Model Name & Description	Micron Rating	Volume (cu ft)	Weight (lbs)	Case Quantity	Price
158598	1/4" #10 3G Slim Line Black/Blue Mounting Bracket Cap w/PR	N/A	2.69	32.4	12	\$15.82
158599	1/4" #10 3G Slim Line Blue/Clear Mounting Bracket Cap w/o PR	N/A	2.69	30.6	12	\$23.01
158601	1/4" #10 3G Slim Line White/White Mounting Bracket Cap w/o	N/A	2.69	32.2	12	\$15.54
158603	1/4" #10 3G Slim Line Black/Blue Quick-Change Mounting	N/A	2.69	32.5	12	\$21.72
158125	1/4" #10 Slim Line White/White Housing w/o PR	N/A	2.05	22.2	12	\$8.75
158614	3/8" #10 3G Slim Line Black/Blue Quick-Change Mounting	N/A	2.69	32.3	12	\$22.38
158616	3/8" #10 3G Slim Line Blue/Clear Quick-Change Mounting	N/A	2.69	30.7	12	\$28.57



### 3G Slim Line Housings with Integrated Bracket

Part No.	Model Name & Description	Micron Rating	Volume (cu ft)	Weight (lbs)	Case Quantity	Price
158002	3/8" #5 Blue/Black w/PR	N/A	1.31	16	12	\$15.90
158003	3/8" #5 Blue/Black w/o PR	N/A	1.31	16	12	\$16.17
158114	1/4" #10 Slim Line Blue/Black w/o PR	N/A	2.05	26.2	12	\$11.24
158115	1/4" #10 Slim Line Blue/Black w/PR	N/A	2.05	26.4	12	\$11.50
158005	3/8" #10 Slim Line Blue/Black w/PR	N/A	2.05	26.4	12	\$11.56
158006	3/8" #10 Slim Line Blue/Black w/o PR	N/A	2.05	26.2	12	\$11.29
158007	3/8" #10 Slim Line Clear/Blue w/PR	N/A	2.05	22.4	12	\$17.60
158195	1/2" #10 Slim Line Blue/Black w/PR	N/A	2.05	26.4	12	\$17.10
158214	1/2" #10 Slim Line Clear/Blue w/PR	N/A	2.05	22.4	12	\$25.35
158319	1/2" #10 Slim Line Black/Black High Temperature Housing w/o	N/A	1.21	38	12	\$67.51
158204	1/2" #20 Slim Line Blue/Black w/PR	N/A	3.19	37	8	\$36.71

#### 3G Slim Line Features, Options, and Benefits:

10-inch housings available with clear or opaque sump

Buttress threads for additional strength and easier cartridge changes

Housing accepts our proprietary Seal-Safe double o-ring sealing cartridges as well as DOE (double open end) cartridges

Leak-proof sealing with a top-seated floating Buna-N o-ring.

John Guest and NPT threaded connections offered in 1/4", 3/8", and 1/2"

Cap styles include mounting boss, integral bracket, meter mount and optional pressure relief/bleed valve

Filter Housings Tested and Certified by NSF International to NSF/ANSI Standard 42 for material and structural integrity requirements.



Standard Filter Housings are manufactured of a durable polypropylene or clear FDA-compliant Styrene-Acrylonitrile (SAN). All are equipped with 3/4" NPT inlet and outlet ports. Standard Filter Housings are available in both 10" and 20" lengths and will accommodate a wide range of 2-1/2" to 2-7/8" diameter cartridges. The reinforced polypropylene cap offers an optional pressure relief button on the inlet side to relieve pressure inside the housing when changing filter cartridges.

### Features, Options, and Benefits:

- Ideal for a wide range of applications, including residential, commercial and industrial
- Available in 10" and 20" lengths
- Optional pressure relief/bleed button on inlet side of cap
- Thick walls for increased strength
- Leak-proof sealing with top-seated Buna-N o-ring
- Available with clear or opaque sumps

The 150001, 150002, 150067, 150068, 150071, 150072, 150435 and 150436 are Tested and Certified by NSF International to NSF/ANSI Standard 42 for material and structural integrity requirements.

## 3G Standard Housings

Part No.	Model Name & Description	Micron Rating	Volume (cu ft)	Weight (lbs)	Case Quantity	Price
150542	3/4" #10 3G Standard Black/Blue Mounting Bracket Cap w/PR	N/A	3.22	38.6	12	\$26.05
150546	3/4" #10 3G Standard Black/Blue Mounting Bracket Cap w/o PR	N/A	3.22	38.6	12	\$25.78
150558	3/4" #10 3G Standard Blue/Clear Mounting Bracket Cap w/PR	N/A	2.69	32.3	12	\$33.32
150544	3/4" #20 3G Standard Black/Blue Mounting Bracket Cap w/PR	N/A	4.11	32.9	8	\$44.80
150560	3/4" #20 3G Standard Blue/Clear Mounting Bracket Cap w/PR	N/A	4.09	32.7	8	\$63.65

### 3G Standard Housings & Valve-in-Head Housings

Part No.	Model Name & Description	Micron Rating	Volume (cu ft)	Weight (lbs)	Case Quantity	Price
150067	3/4" #10 Standard Blue/Blue w/PR Mounting Bracket Cap	N/A	2.75	37.4	12	\$27.16
150071	3/4" #10 Standard Clear/Blue w/PR Mounting Bracket Cap	N/A	2.75	34.7	12	\$34.63
150069	3/4" #20 Standard Blue/Blue w/PR Mounting Bracket Cap	N/A	3.19	37.5	8	\$46.37
150070	3/4" #20 Standard Blue/Blue w/o PR Mounting Bracket Cap	N/A	3.19	37.3	8	\$46.10
150164	3/4" Valve-In-Head #10 Blue/Black w/PR	N/A	2.75	44	12	\$48.13
150437	3/4" Valve-In-Head #10 Clear/Blue w/PR	N/A	2.75	43	12	\$58.01
150166	3/4" Valve-In-Head #20 Blue w/PR	N/A	3.09	40	8	\$67.14

### 3G Standard Housings with Integrated Bracket

Part No.	Model Name & Description	Micron Rating	Volume (cu ft)	Weight (lbs)	Case Quantity	Price
150550	3/4" #10 3G Standard Black/Blue Integral Bracket Cap w/PR	N/A	4.67	56	12	\$28.95
150566	3/4" #10 3G Standard Blue/Clear Integral Bracket Cap w/PR	N/A	4.74	56.9	12	\$36.16
150552	3/4" #20 3G Standard Black/Blue Integral Bracket w/PR	N/A	6.16	49.3	8	\$47.63

Big Blue® Filter Housings offer the versatility to meet all of your large-capacity filtration needs, including high flow and heavy sediment applications. The extra-large housing allows for greater cartridge capacity, reducing the number of vessels required for high flow rate applications. Sumps are constructed of durable reinforced polypropylene and are available in both 10" and 20" lengths.

**Features, Options, and Benefits:**

- Large capacity housing suitable for high flow applications
- 10" and 20" lengths available in opaque and clear
- Pressure relief/bleed on inlet side of cap
- Accepts 4-1/2" diameter cartridges

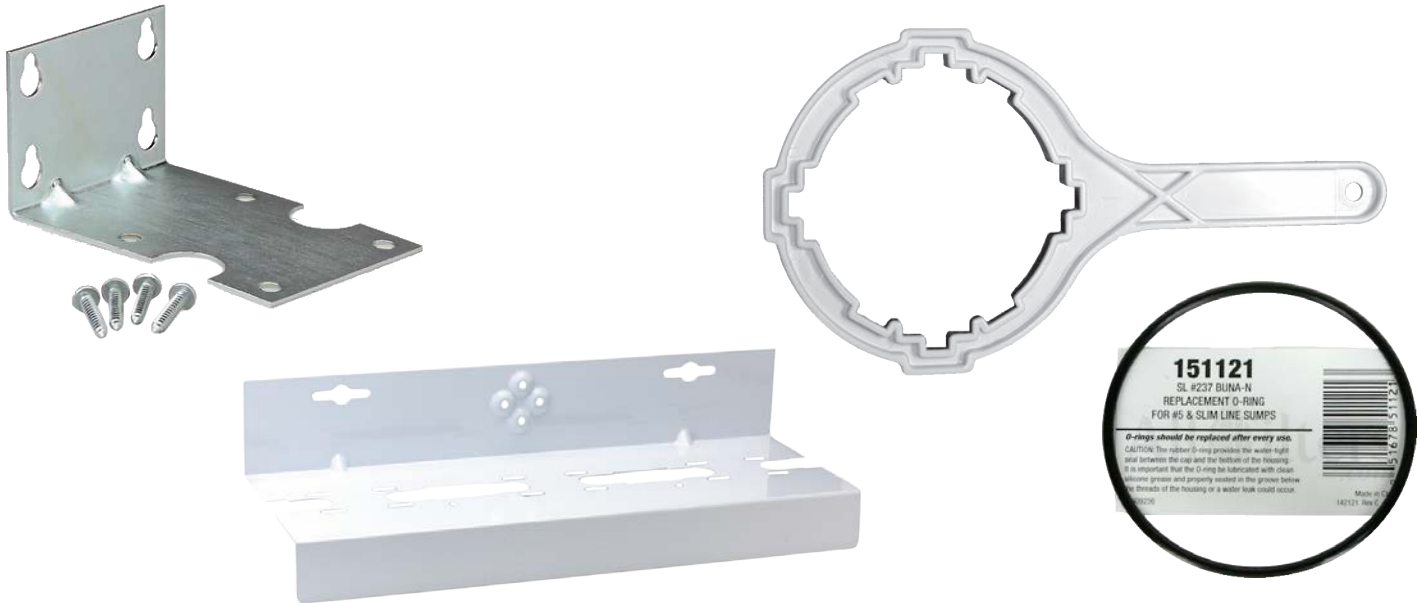
The 150233, 150234, 150235, 150236, 150237, 150238, 150239, 150240, 150467, 150468, 150469, and 150470 Tested and Certified by NSF International to NSF/ANSI Standard 42 for material and structural integrity requirements.

NOTE: The Big Clear Series of housings are not NSF component listed.



### Big Blue & Big Clear Housings

Part No.	Model Name & Description	Micron Rating	Volume (cu ft)	Weight (lbs)	Case Quantity	Price
150469	3/4" #10 Big Blue HFPP w/PR	N/A	2.79	33.4	6	\$38.95
150237	1" #10 Big Blue HFPP w/PR	N/A	2.56	33.4	6	\$37.00
150238	1" #10 Big Blue HFPP w/o PR	N/A	2.56	33.1	6	\$35.00
166219	1" #10 Big Clear (Lexan) Blue/Clear w/PR	N/A	2.56	33.4	6	\$125.96
150467	3/4" #20 Big Blue HFPP w/PR	N/A	3.55	27.9	4	\$55.00
150233	1" #20 Big Blue HFPP w/PR	N/A	3.16	27.9	4	\$54.00
150234	1" #20 Big Blue HFPP w/o PR	N/A	3.16	27.6	4	\$53.85
150239	1-1/2" #10 Big Blue HFPP w/PR	N/A	2.56	34.6	6	\$39.85
150240	1-1/2" #10 Big Blue HFPP w/o PR	N/A	2.56	34.3	6	\$39.65
150235	1-1/2" #20 Big Blue HFPP w/PR	N/A	N/A	N/A	1	\$57.30



## Pentek Accessories

### Filter Housing Mounting Brackets

Part No.	Model Name & Description	Micron Rating	Volume (cu ft)	Weight (lbs)	Case Quantity	Price
244046-00	SL-ZP - Zinc Plated Bracket ONLY for Slim Line	N/A	N/A	0.15	1	\$1.84
244043	MC-1A - Zinc Plated Bracket ONLY for Standard	N/A	N/A	0.41	1	\$2.88
244047	SL-ZP Kit - Zinc Plated Bracket for Slim Line	N/A	N/A	0.22	1	\$4.27
150578	MC-1A Kit - Zinc Plated Bracket for Standard	N/A	N/A	0.64	1	\$6.51
151011	UB-1 Kit - Zinc Plated Bracket for Valve-In-Head Housing (U-Shaped)	N/A	N/A	N/A	1	\$6.70
244627-02	Two-Housing CCF and RO System Bracket	N/A	N/A	N/A	1	\$13.08
144258	Two-Housing Big Blue Bracket	N/A	N/A	N/A	1	\$51.26
144259	Three-Housing Big Blue Bracket	N/A	N/A	N/A	1	\$86.41

Pentek Brackets, Wrenches & O-Rings

### Filter Housing Wrenches

Part No.	Model Name & Description	Micron Rating	Volume (cu ft)	Weight (lbs)	Case Quantity	Price
150539	SW-1A for Slim Line <sup>®</sup> Housings (formerly 150294)	N/A	N/A	N/A	1	\$3.55
150295	SW-2 for Standard Housings	N/A	N/A	N/A	1	\$3.55
150296	SW-3 for Big Blue <sup>®</sup> Housings (10-inch)	N/A	N/A	N/A	1	\$3.82
144368	SW-4 for Big Blue <sup>®</sup> Housings (20-inch)	N/A	N/A	N/A	1	\$3.82
144880	BW/BC Wrench for Big Clear and Big White Housings	N/A	N/A	N/A	1	\$5.80

### Filter Housing O-Rings

Part No.	Model Name & Description	Micron Rating	Volume (cu ft)	Weight (lbs)	Case Quantity	Price
151120	#241 Buna-N O-ring for Standard Housings	N/A	N/A	N/A	1	\$1.86
151121	#237 Buna-N O-ring for Slim Line <sup>®</sup> Housings	N/A	N/A	N/A	1	\$1.86
151122	Big Blue O-Ring	N/A	N/A	N/A	1	\$6.12
151254	Square-cut O-ring for Big White and Big Clear 10"	N/A	N/A	N/A	1	\$6.12

From small or simple...to large, heavy duty or complex, Pentek filtration products come in a wide range of styles, sizes and capabilities. All have been designed for easy installation and maintenance, and are backed by a certified and dedicated technical support team to help with any application questions or issues that may arise.



Pentek Quick Change Filtration Systems are designed for easy installation and cartridge change. 1/4-inch and 3/8-inch push fittings, as well as 1/4-inch compression fittings, on the inlet and outlet sides of the filter head allow effortless installation. Many single systems are NSF Certified.

The cartridge filter is easily changed with a quarter-turn of the filter. Water is automatically shut off during the change of the filter through the auto-shut feature built into the filter head. This feature eliminates the need for additional shut-off valves to and from the filter system.

### Features, Options, and Benefits:

- Easy to install, easy filter change
- Unique cover for single unit for a more appealing look
- Reversible metal brackets for 1, 2, or 3 cartridges
- 1/4-inch or 3/8-inch John Guest® push-fit connections available
- 1/4-inch compression connections available for flex hose connections
- Seven cartridge models to choose from to meet specific application needs.

See the ProWaterParts website for NSF certifications.

## Quick-Change Filter Systems

Part No.	Model Name & Description	Micron Rating	Volume (cu ft)	Weight (lbs)	Case Quantity	Price
158682	QC10-CBR-1/4PF Block w/Lead Reduction	0.5	0.51	8.5	6	\$42.53
158721	QC10-CB1-1/4PF 1 micron Carbon Block	1	0.508	10.2	6	\$42.05
155785-43	QC10-CBRR Replacement Cartridge	0.5	0.41	13.2	12	\$30.13
255705-43	QC10-CB1R Replacement Cartridge	1	0.41	10.2	12	\$29.45

## Notes









**ProWaterParts**

1359 Gresham Road  
Marietta, Georgia 30062

Tel: 770.420.6447

Fax: 1.866.977.6339

Email: [sales@prowaterparts.com](mailto:sales@prowaterparts.com)

Web: [www.prowaterparts.com](http://www.prowaterparts.com)